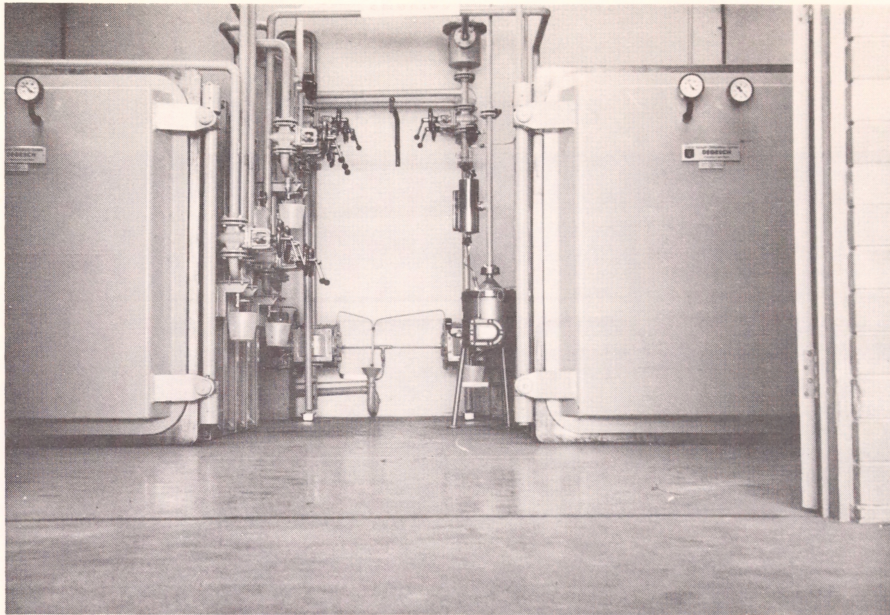
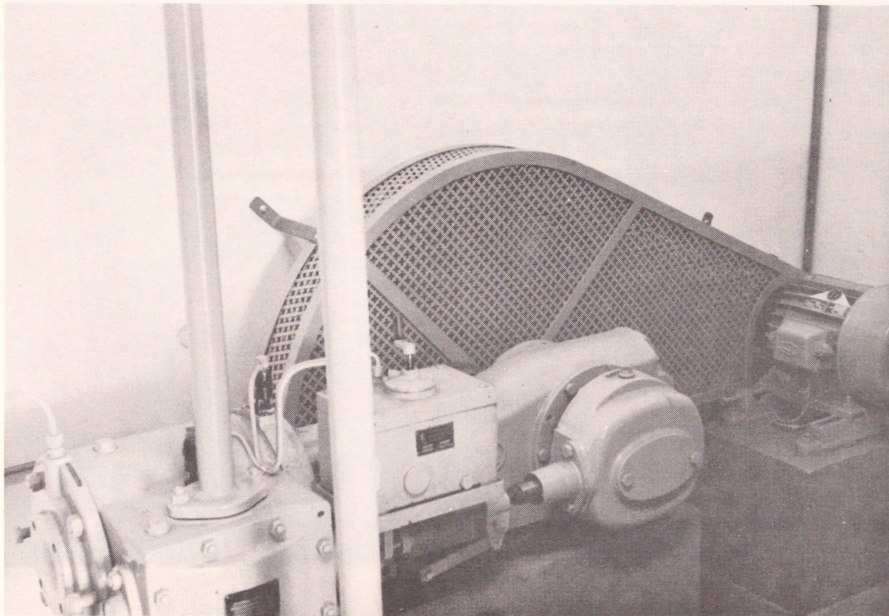


Queensland State Archives fumigation plant before final painting. An Assistant draws the necessary amount of fumigant into the measuring vessel, from which it passes to the vaporiser.



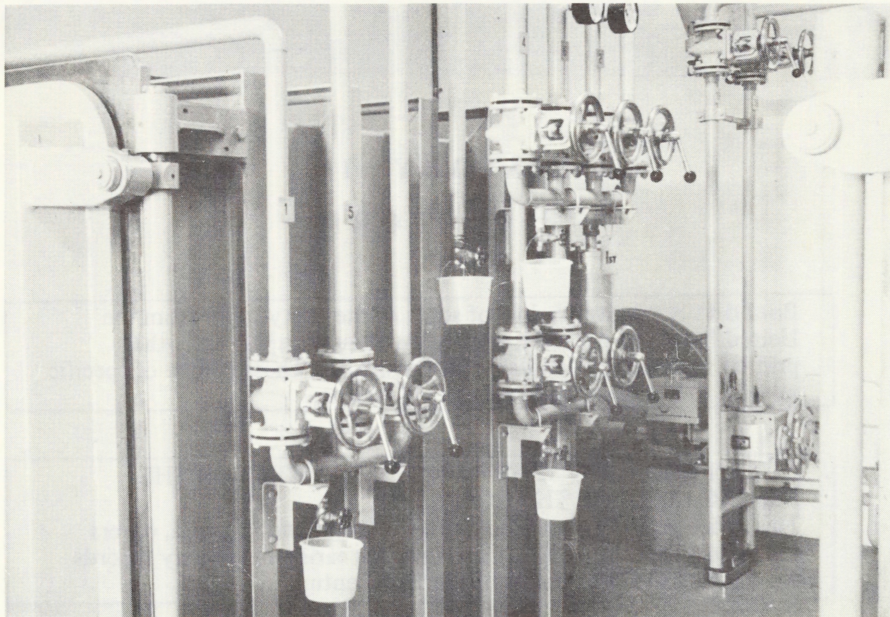


Queensland State Archives fumigation plant after final painting. The two chambers, control valves and vaporiser can be seen, with water cooled motors in the background, about 18" from the floor

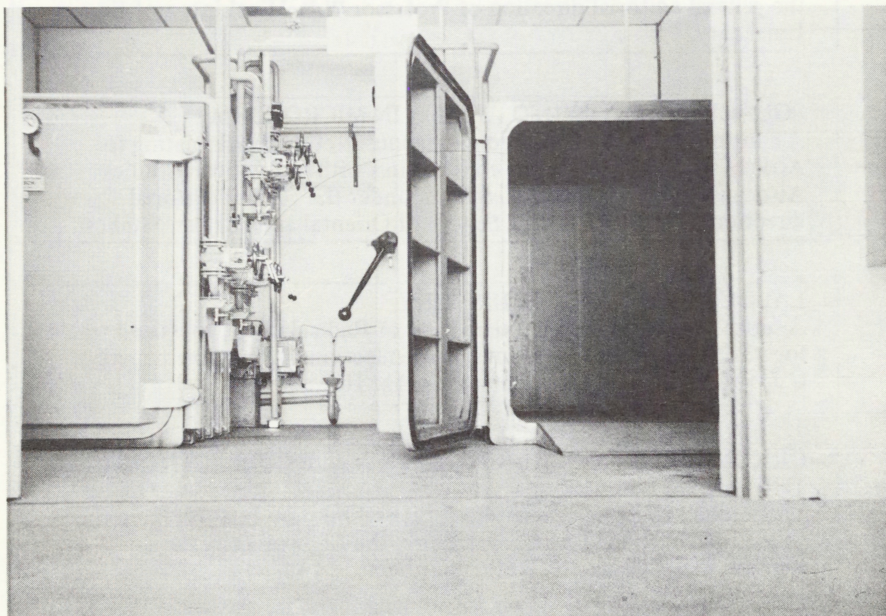


One of the two identical pumps, with its electric motor.





Control valves are located to one side of the central aisle between the two chambers, but are used to operate either chamber.



One chamber stands open, ready to receive records. Note the ramp that had to be supplied to enable trolleys to be wheeled into the chamber.